



# Infant Stool Colour Card

ሕብራዊ ካርድ ድኳ ሕጻናት

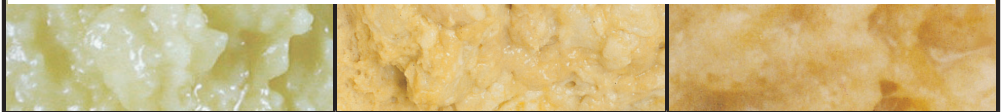
## ABNORMAL Stool Colours

ዘይልመድ ሕብርታት ድኳ



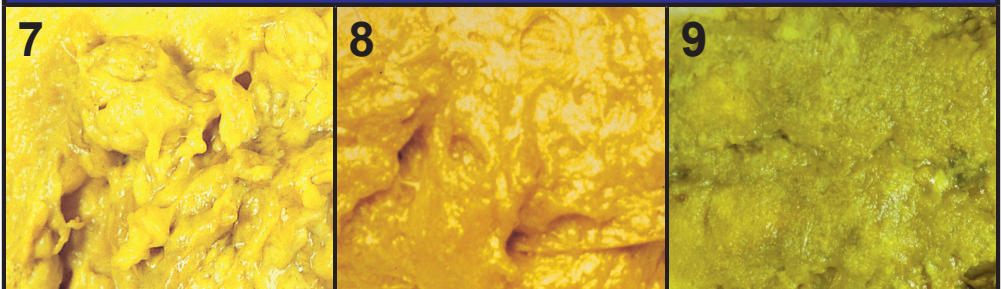
Consult the physical version of this card for greater colour accuracy.

ዝያዳ ልክዕነት ምእንቲ ኺህልወኩም ነቲ ግኡዝ ሕታም እዛ ካርድ እዚኣ ኣማኽኩዎ።



## NORMAL Stool Colours

ልመድ ሕብርታት ድኳ



## INSTRUCTIONS

Check your baby's stool (poop) colour every day for the first month after birth to screen for biliary atresia.

**If your baby has an abnormal stool colour (see above colours 1,2,3,4,5,6), please contact Newborn Screening Ontario by phone or email or by scanning the QR code below.**

## መምርሒታት

ኣብታ ኹብ እትውለድ-ዲ ድሕሪ ምውለድኩም ዝነበረት ቀዳመይቲ ወርሒ ኣብ ነፍሲ ወከፍ መዓልቲ ንሕብሪ ድኳ ውሉድካ ርእየዎ።

ውሉድካ ዘይልመድ ሕብርታት ድኳ እንተ ኣልይዎ (ኣብ ልዕሊ ሕብርታት 1,2,3,4,5,6 ርእየዎ) በጃኹም ምስ ናጽላ ምርመራ (ኒውቦርን ስክሪንን) ኣንታርዮ ብተሌፎን ብኢ-መይል ወይ ነቲ ኣብ ታሕቲ ዘሎ ኮድ QR ስካን ብምግባር ተራኽቡ።

Phone / ተሌፎን : **1-833-POOP-CHK**  
(1-833-766-7245)

Online / ኣብ መስመር : [www.newbornscreening.on.ca/poop](http://www.newbornscreening.on.ca/poop)

Email / ኢ-መይል : [NSOBA@cheo.on.ca](mailto:NSOBA@cheo.on.ca)





**When identification and treatment start early, babies with biliary atresia can have a better chance to grow and develop normally.**

### What is biliary atresia?

Biliary atresia (BA) is a rare but serious disease where bile cannot get from the liver to the stool (poop). Babies with BA usually seem well but they can develop **pale yellow or whitish coloured stools** in the first month of life. Along with the pale poop, these babies can have yellow skin and eyes (**jaundice**) **lasting longer than the first two weeks of life**. Without treatment, babies with BA will develop life-threatening liver damage. Treatment is most effective when babies are identified before they are one month old.

### How can you screen for biliary atresia?

You can screen for BA by comparing your baby's stool (poop) colour to the numbered pictures on the front of this card, for the first month after birth. Screening for abnormal stool colour can help to identify problems with the liver earlier. Keep this card close by when you change your baby's diaper.

### Who do I contact and when?

**If at any time during the screening you notice that your baby has an abnormal stool colour (number 1,2,3,4,5, or 6), please contact Newborn Screening Ontario using the information on the front of this card.**

Please have available the baby's name, birth date, and health card number. If you also choose to see your doctor, please take this card with you.

### What happens next?

First, don't be alarmed. This is a screening tool and not a diagnostic test. A clinical team member from Newborn Screening Ontario will return your call by the next business day to discuss your concern and begin next steps. Your privacy and health information is protected. Learn more: [www.newbornscreening.on.ca/privacy](http://www.newbornscreening.on.ca/privacy)

If you have concerns about your baby **other than stool colour**, please contact your health care provider. For more information about biliary atresia, visit our website or scan the QR code on the front of the card.

**Information is available in other languages. / ኣብፊታ ብኻልኣ ቋንቋታት ኣውን ይርከብ እዩ ።**  
[www.newbornscreening.on.ca/poopcard](http://www.newbornscreening.on.ca/poopcard)

ኣቕዲሙ ኸርከብ ኸሎን፤ ኣቕዲሙ ሕክምና ኸጅመር ኸሎ፤ ቢልያሪ ኣፊስያ ዘለዎም ሕጻናት ንቡር ዕቤት ንኺገብሩን ንኺግብዩን ዝሓሸ ኢጋጣሚ ኺረኽቡ ይኽእሉ እዮም።

### ቢልያሪ ኣትረስያ ኣንታይ እዩ?

ቢልያሪ ኣትረስያ (BA) ካብ ጸላም ከብዲ ናብ ድኻ ኺኣቱ ዘይከኣል ሳሕቲ ዜጋጥም ግናኽ ኺበድ ሕሞም እዩ። BA ዘለዎም ሕጻናት መብዛሕኡ ግዜ ደሓን ዝመስሉ እኳ እንተኹን ኣብታ ቐዳመይቲ ወርሒ ግን ጨላይ ብጫ ወይ ድመቕ ዝሕብሩ ድኻታት ኪህልዎም ይኽእል እዩ። እዞም ሕጻናት እዚላቶም ምስቲ ድመቕ ሕንዚዝ ጥራይ ዘይኩነስ ካብተን ናይ መጀመርታ ኸልተ ሰሙን ንላዕሊ ብጫ ቁርቢትን ኣዲንትን (ጃንዲስ) ኪህልዎም ይኽእል እዩ። BA ዘለዎም ሕጻናት ሕክምና እንተ ዘይተገይሩሎም ንህይወቶም ኣብ ሓዲጋ ዜኣቱ ጉድኣት ጸላም ከብዲ ኺሕድሩ እዮም። ሕጻናት ደቂ ሓዲ ወርሒ ቐድሚ ምዃናም እንተተፈለጉ ሕክምና ኣዝዩ ውጽኢታዊ እዩ ።

### ናይ ቢልያሪ ኣትረስያ ብኸመይ ከትርይዎ ትኽእሉ?

ናይ ቢልያሪ ኣትረስያ ንምርኣይ ኣብታ ድሕሪ ሕርሲ ዘላ ቐዳመይቲ ወርሒ፡ ድኻ ሕጻንኩም (ሕቕፊ) ምስቲ ኣብ ቅድሚት እዛ ካርድ እዚላ ዘሉ ቐድሞታት ዘለዎ ስእልታት ኣነጻጽሩ። ዘይልሙድ ሕብርታት ድኻ እንተ ድኻ መርሚርኹም ጸላም ከብዲ ኣቐዲምኩም ጸገማት ከም ዘሉ ንምናላጥ ከሕግዝ ይኽእል ኢዩ። ዓለባ ውሉድኩም ኸትቅይሩ ከለኹም ነዛ ካርድ እዚላ ኣጽኒዕኩም ሓዘዋ።

### ምስ መንን መዓስን እዩ ዝረኽብ ?

ኣብ ዝኹነ ይኹን ኣዋን ውሉድኩም ዘይልሙድ ሕብርታት ድኻ ኸም ዘለዎ (ቀጽጺ 1,2,3,4,5 ወይ 6) እንተ ኣስተብሂልኩም በጃኹም ነቲ ኣብ ቅድሚት እዛ ካርድ እዚላ ዘሉ ኣብፊታ ተጠቐምኩም ምስ ናጽላ ስኬሪኒንግ ኣንታርር ተራኸቡ ።

ስም ኦቲ ሕጻን ዕለት ልደት ከምኡውን ቀጽጺ ካርድ ጥዕና ኣብ ቀረባ ሓዘዎ። ናብ ሓኪምኩም ኸከትኩዎ እንተ መሪጽኩም በጃኹም ነዛ ካርድ እዚላ ምሳኸም ውሳዕዎ።

### ቀጺሉ እንታይ እዩ ዚኸውን ?

ፈለማ ኣይትሰንቡዎ። እዚ ናይ ምርመራ መሳርሒ ደኣ እምበር ናይ ምርመራ ፈተና ኣይኩነን። ኣብ ናጽላ ስኬሪኒንግ ኣንታርር ዚከበር ኣባል ጉጅለ ሕክምና ኣብ ዚቐጽል መገልጻቲ ስራሕ ካብኹም ተመሊሱ ብዛዕባ ሻቕሎትኩም ኺመያየጥን ዚቐጽል ስጉምትታት ኪጅምርን እዩ። ናይ ብሕትኻን ናይ ጥዕና ሓበሬታኻን ዕቕባ ይኹኒኩም። ዝያዳ ተምሃር: [www.newbornscreening.on.ca/privacy](http://www.newbornscreening.on.ca/privacy)

ብዛዕባ ሕጻንኩም ኺብ ሕብር ድኻ ሓሊፉ ኸልእ ዚተሓሳስበኩምኩም እንተ ኹይኑ በጃኹም ምስ ኣላዩ ኸንከን ጥዕናኹም ተራኸቡ። ብዛዕባ ቢልያሪ ኣፊስያ ዝያዳ ኣብፊታ እንተ ደሊኹም ኣብ ውበ ሳይትና ርእይ ወይ ከእ ነቲ ኣብ ቅድሚት ኢኦ ካርድ ዘሉ ኮድ QR ስካን ግብሩ።

We thank

Health Promotion Administration, Ministry of Health and Welfare, Taiwan, and Professor Mei-Hwei Chang, National Taiwan University, College of Medicine for authorizing the use of stool colour photos. / ሕብራዊ ስእልታት ድኻ ኸትጥቀሙ ስለ ዝፈቐድኩምልና ነጥባዝኩም ።

For permission to use any content on this card, please contact NSO. ኣብዛ ካርድ እዚላ ዘሉ ትሕዝባ ኸትጥቀሙ ናቓይ ኣንተ ደሊኹም በጃኹም ምስ NSO ተራኸቡ